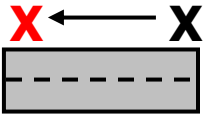
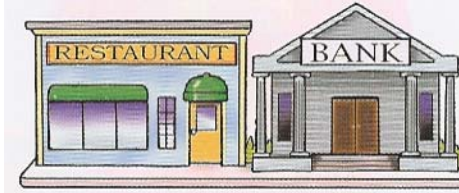
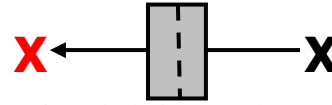


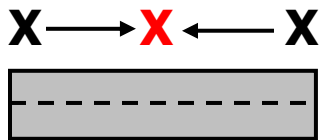
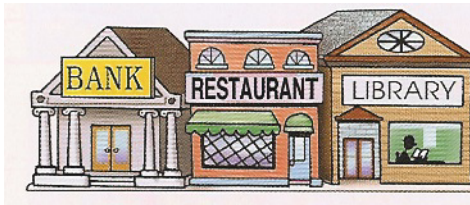
# PREPOSITIONS OF LOCATION



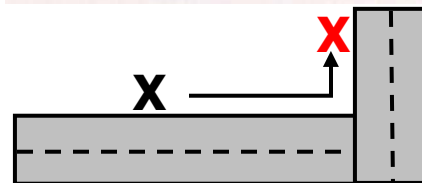
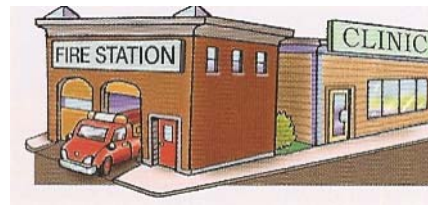
1. **NEXT TO**



2. **ACROSS FROM**



3. **BETWEEN**



4. **AROUND THE CORNER FROM**

## THERE IS / THERE ARE

I. DEFINITION – An expletive that really has no meaning other than expressing the existence of someone or something in a particular place.

II. FORMATION

A. **THERE IS** + singular noun (phrase)

B. **THERE ARE** + plural noun (phrase)

III. EXAMPLES

**There is** *a book* on the shelf.

**There are** *20 students* in the class.

**There's** *a fly* in the room.

**There are** *cookies* on the table.